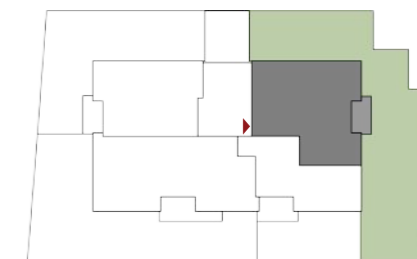


Appartamento 4


Quadrilocale - Piano terra




planimetria arredata scala 1:100


 orientamento

 appartamento 97,71 mq

 loggia 3,48 mq (50% di 6,95 mq)

 giardino 12,27 mq
(15% di 25,00mq, 5% di 195,44-25,00mq)

 cantina 1,26 mq (35% di 57,40/16 mq)

 parti comuni 10,38 mq

 totale commerciali 125,10 mq

N.B. In fase esecutiva potrebbero essere apportate alcune modifiche ed adeguamenti dimensionali dipendenti da esigenze strutturali, impiantistiche e costruttive.