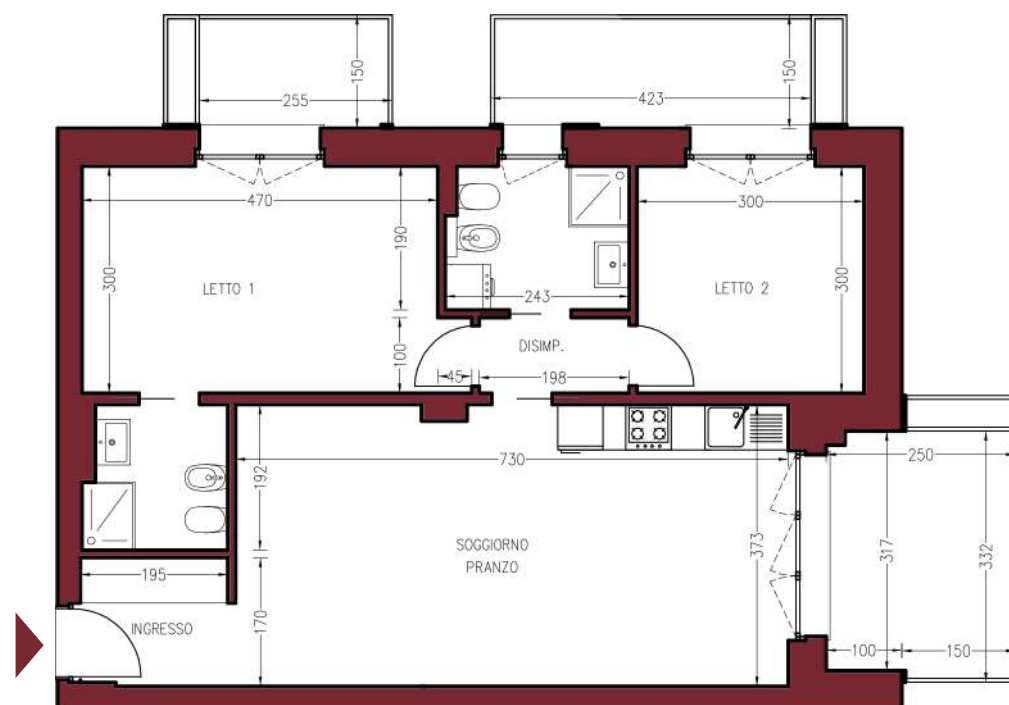


Appartamento 12

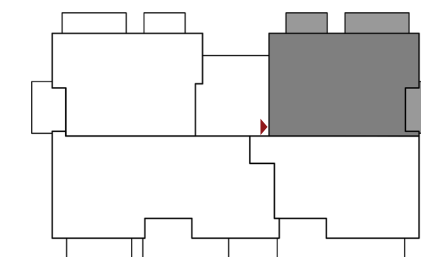
Trilocale- Piano secondo



planimetria arredata scala 1:100




planimetria quotata scala 1:100




 orientamento

 appartamento 79,57 mq

 balconi 10,21 mq (50% di 20,42 mq)

 cantina 1,26 mq (35% di 57,40/16 mq)

 parti comuni 8,63 mq

 totale commerciali 99,67 mq

N.B. In fase esecutiva potrebbero essere apportate alcune modifiche ed adeguamenti dimensionali dipendenti da esigenze strutturali, impiantistiche e costruttive.